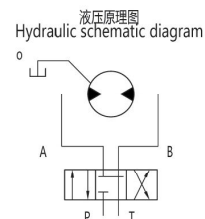
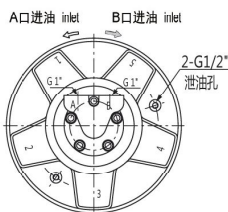
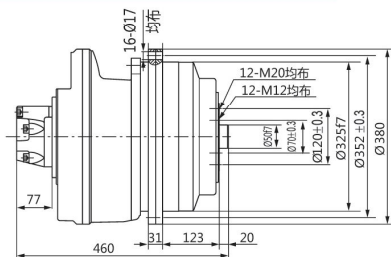


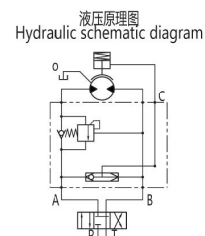
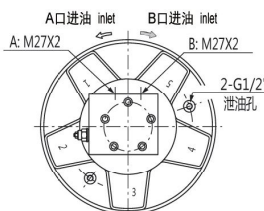
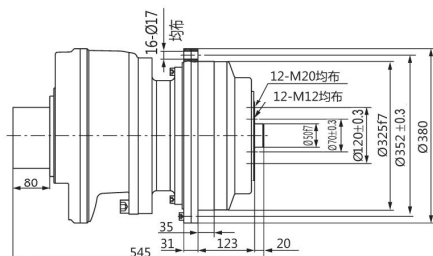
GFR4 液压传动装置

GFR4 Hydraulic Transmission Devices

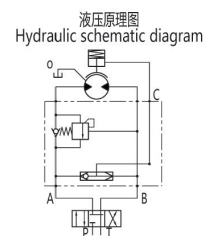
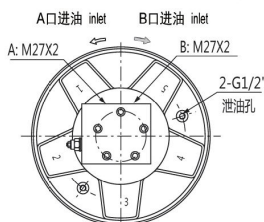
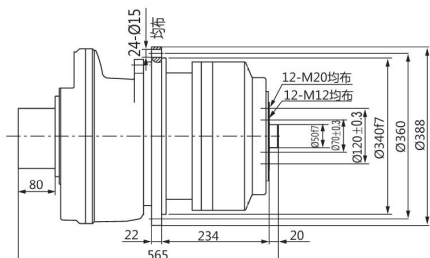
◆无制动器 / Without brake



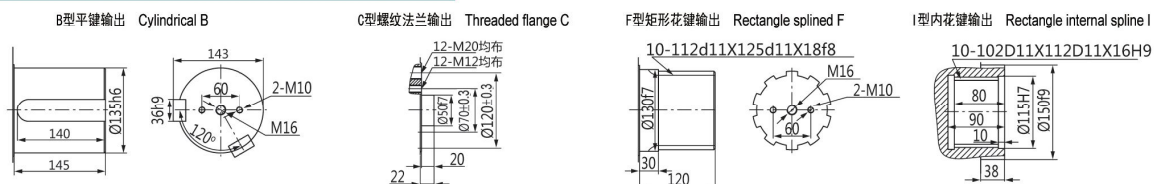
◆带制动器 (外置式) / With brake and external installation



◆带制动器 (内置式) / With brake and internal installation



◆输出轴尺寸 / Shaft dimensions



| 型号 Model | 总排量 (ml/r) Total displacement | 额定扭矩 (N.m) Rated torque | 转速范围 Speed | 总效率 Total efficiency | 液压马达型号 Hydraulic motor | 行星减速器型号 Poanetary gearbox | 制动器型号 Brake |
|-------------|----------------------------------|----------------------------|---------------|-------------------------|---------------------------|------------------------------|----------------|
| | | 20MPa | | | | | |
| GFR4-2450 | 2430 | 6860 | 0-80 | 0.9-0.91 | GM3-500 | C4-5 | Z4 |
| GFR4-3000 | 2975 | 8398 | 0-80 | 0.9-0.91 | GM3-600 | C4-5 | Z4 |
| GFR4-3500 | 3450 | 9774 | 0-80 | 0.9-0.91 | GM3-700 | C4-5 | Z4 |
| GFR4-4000 | 3960 | 11222 | 0-80 | 0.9-0.91 | GM3-800 | C4-5 | Z4 |
| GFR4-4400 | 4356 | 12344 | 0-70 | 0.9-0.91 | GM3-800 | C4-5.5 | Z4 |
| GFR4-4800 | 4801 | 13538 | 0-70 | 0.9-0.91 | GM3-900 | C4-5.5 | Z4 |

注：外形联结尺寸及输出轴有特殊要求，请与我们联系 / Note: Please contact us if there are any requirements from customer