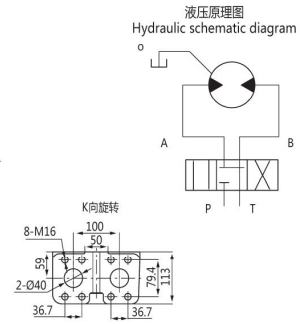
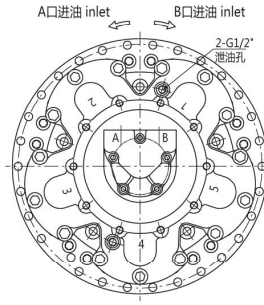
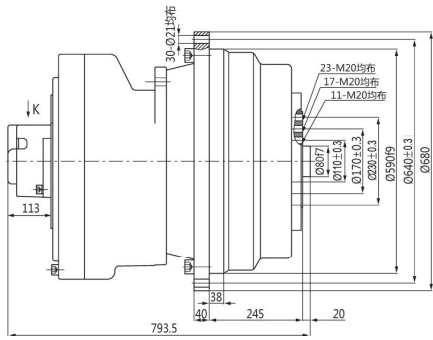
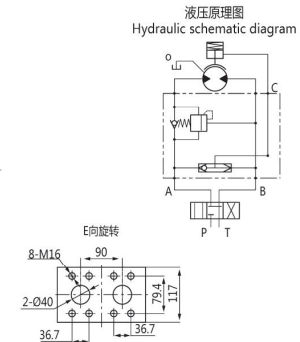
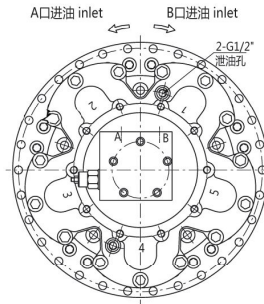
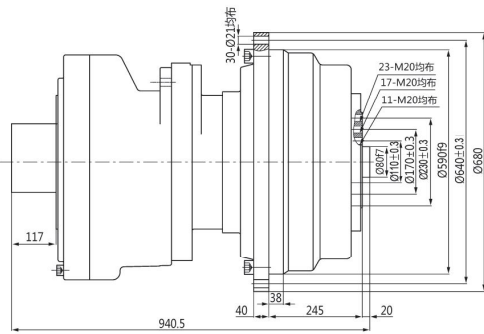


GFR7 液压传动装置 GFR7 Hydraulic Transmission Devices

◆无制动器 / Without brake

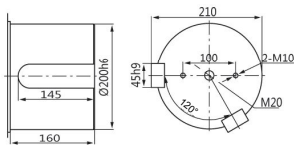


◆带制动器 (内置式) / With brake and internal installation

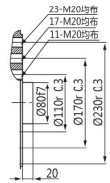


◆输出轴尺寸 / Shaft dimensions

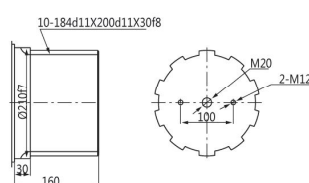
B型平键输出 Cylindrical B



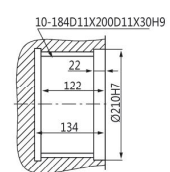
C型螺纹法兰输出 Threaded flange C



F型矩形花键输出 Rectangle splined F



I型内花键输出 Rectangle internal spline I



型号 Model	总排量 (ml/r) Total displacement	额定扭矩 (N.m) Rated torque	转速范围 Speed	总效率 Total efficiency	液压马达型号 Hydraulic motor	行星减速器型号 Poanetary gearbox	制动器型号 Brake
		20MPa					
GFR7-15200	14925	42995	0-35	0.9-0.91	GM7-3000	C7-5	Z7
GFR7-16500	16450	47332	0-35	0.9-0.91	GM7-3300	C7-5	Z7
GFR7-18000	18055	51947	0-35	0.9-0.91	GM7-3600	C7-5	Z7
GFR7-21500	21490	61902	0-35	0.9-0.91	GM7-4300	C7-5	Z7
GFR7-23650	23639	68092	0-30	0.9-0.91	GM7-4300	C7-5.5	Z7

注：外形联结尺寸及输出轴有特殊要求，请与我们联系 / Note: Please contact us if there are any requirements from customer