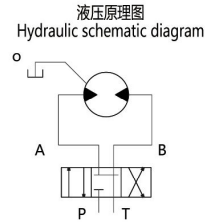
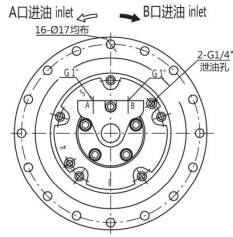
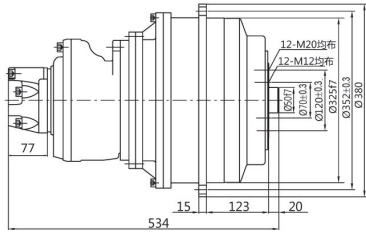
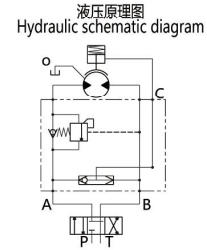
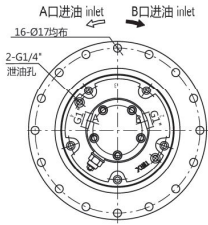
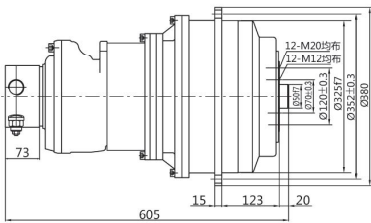


GFR34 液压传动装置 GFR34 Hydraulic Transmission Devices

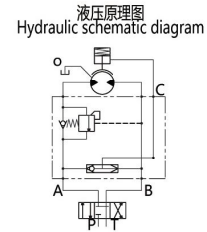
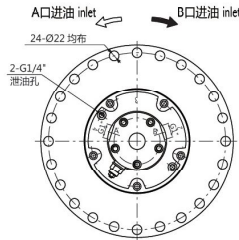
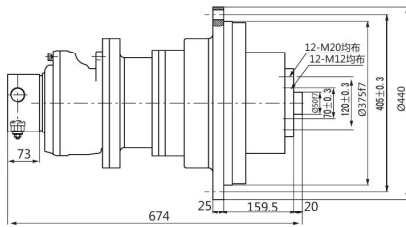
◆无制动器 / Without brake



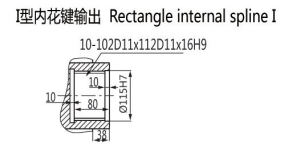
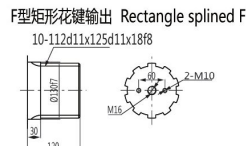
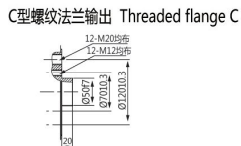
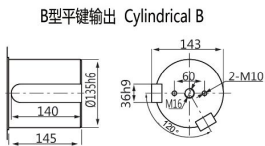
◆带制动器 (外置式) / With brake and external installation



◆带制动器 (内置式) / With brake and internal installation



◆输出轴尺寸 / Shaft dimensions



型号 Model	总排量 (ml/r) Total displacement	额定扭矩 (N.m) Rated torque		转速范围 Speed	总效率 Total efficiency	液压马达型号 Hydraulic motor	行星减速器型号 Poanetary gearbox	制动器型号 Brake
		16MPa	20MPa					
GFR34-3500	3440	7547	9433	0-18	0.88-0.9	GM1-175	C34-20	Z3
GFR34-4000	4020	8842	11052	0-18	0.88-0.9	GM1-200	C34-20	Z3
GFR34-4900	4860	10700	13376	0-18	0.88-0.9	GM1-250	C34-20	Z3
GFR34-5800	5800	12728	15910	0-18	0.88-0.9	GM1-300	C34-20	Z3
GFR34-6800	6804	14980	18725	0-12	0.88-0.9	GM1-250	C34-28	Z3
GFR34-8100	8120	17819		0-12	0.88-0.9	GM1-300	C34-28	Z3

注：外形联结尺寸及输出轴有特殊要求，请与我们联系 / Note: Please contact us if there are any requirements from customer