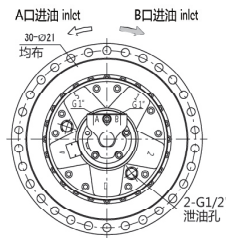
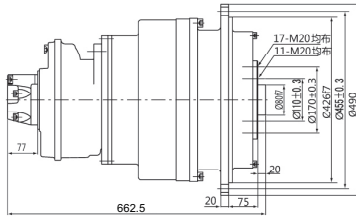
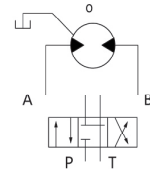


# GFR 45 液压传动装置 GFR45 Hydraulic Transmission Devices

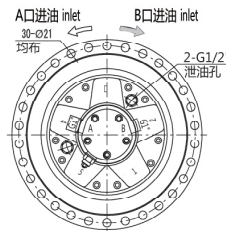
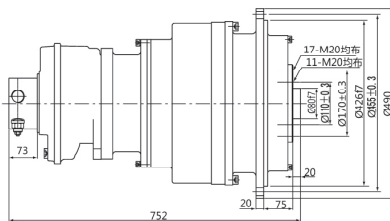
## ◆无制动器 / Without brake



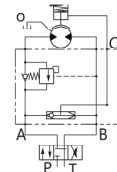
液压原理图  
Hydraulic schematic diagram



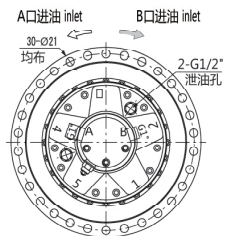
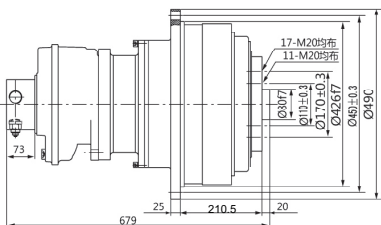
## ◆带制动器 (外置式) / With brake and external installtion



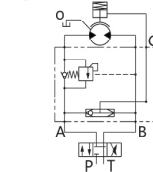
液压原理图  
Hydraulic schematic diagram



## ◆带制动器 (内置式) / With brake and internal installtion

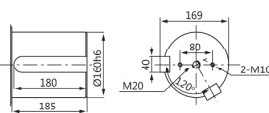


液压原理图  
Hydraulic schematic diagram

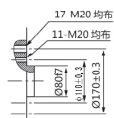


## ◆输出轴尺寸 / Shaft dimensions

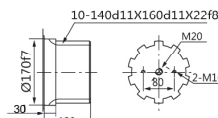
B型平键输出 Cylindrical B



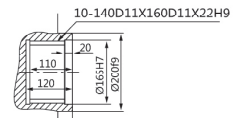
C型螺纹法兰输出 Threaded flange C



F型矩形花键输出 Rectangle splined F



I型内花键输出 Rectangle internal spline I



型号 Model	总排量 (ml/r) Total displacement	额定扭矩 (N.m) Rated torque		转速范围 Speed	总效率 Total efficiency	液压马达型号 Hydraulic motor	行星减速器型号 Poanetary gearbox	制动器型号 Brake
		16MPa	20MPa					
GFR45-7000	6940	15263	19078	0-15	0.88-0.9	GM2-350	C45-20	Z4
GFR45-8500	8500	18646	23344	0-15	0.88-0.9	GM2-420	C45-20	Z4
GFR45-10000	9826	21661	27046	0-15	0.88-0.9	GM2-500	C45-20	Z4
GFR45-12000	11900	26146	32682	0-11	0.88-0.9	GM2-420	C45-28	Z4
GFR45-14000	13804	30325		0-11	0.88-0.9	GM2-500	C45-28	Z4

注：外形联结尺寸及输出轴有特殊要求，请与我们联系 / Note: Please contact us if there are any requirements from customer